

THE NEEDS OF THE ROHINGYA [AND TRYING TO MEET THEM]

The Rohingya refugee crisis bears a number of significant challenges and the Rohingya population have specific needs if they are to settle into the camps in livable conditions. The following are the basic needs in the camps, as outlined in the Joint Response Plan (JRP) published by the Inter-Sector Coordination Group.

THE NEEDS

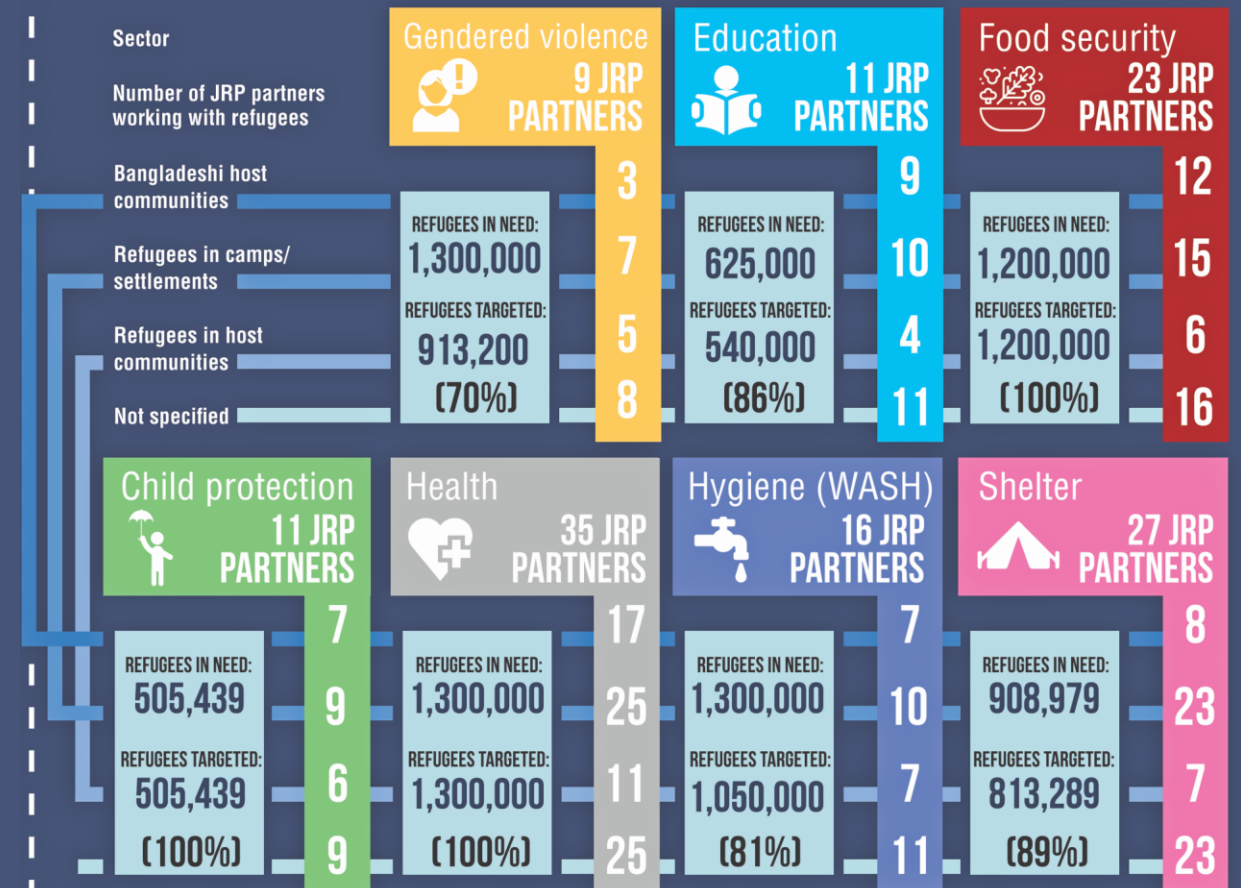


JRP PARTNERS/SECTORS

130 PARTNERS

13 LOCAL
45 NATIONAL
69 INTERNATIONAL

The Inter-Sector Coordination Group brings together over a hundred NGOs to coordinate with the Bangladeshi Government in tackling the Rohingya refugee crisis. There are additional civil society actors and faith-based organisations as well as various government support programmes present in the response to the crisis.



Other areas the partners are working in:

Communication (7) Logistics (2) Nutrition (11) Site mgmt. (9) Protection (16)

** There may be overlaps between partners working with Bangladeshi host and Rohingya refugee communities/settlements.

1.3 MILLION
TOTAL ROHINGYA REFUGEES
IN BANGLADESH (2018)

51% FEMALE
664,000
49% MALE
631,000

703,000 CHILDREN (< 18)
49,000 ELDERLY (> 59)

SOURCE: JOINT RESPONSE PLAN (JRP) PUBLISHED BY ISCG
INFOGRAPHIC: SHAER REAZ